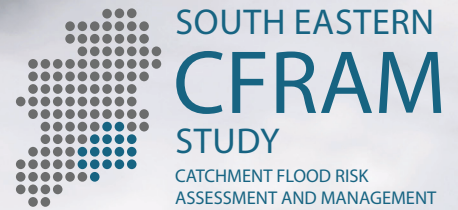
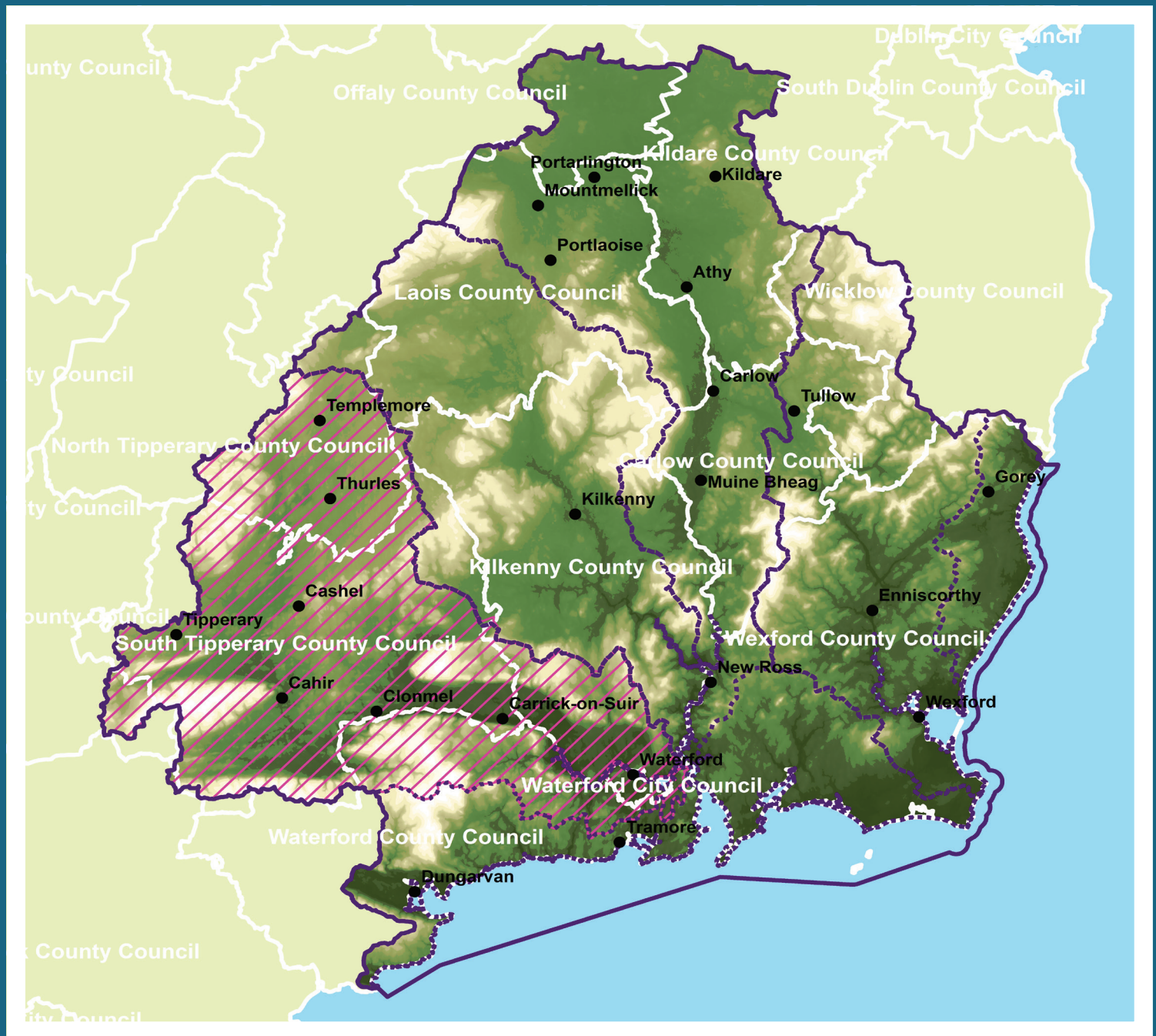


# Newsletter No. 1

March 2012



INSIDE | BACKGROUND | FLOODS DIRECTIVE & CFRAM PROGRAMME | SOUTH EASTERN CFRAM STUDY | SUMMARY OF PROGRESS



## The South Eastern district

The South Eastern district covers about one fifth of the country with an area of nearly 13,000 km<sup>2</sup>. It includes all of counties Kilkenny, Carlow and Wexford, large portions of counties Laois, Waterford, Tipperary, Kildare, Wicklow and Offaly as well as small portions of Cork

and Limerick. The study area contains Waterford City and a number of other large towns. However, much of the district is rural and agricultural in nature. The main rivers in the district are the Slaney, Barrow, Nore and Suir. Approximately half a million people live in the district.

## BACKGROUND

Floods are a natural and inevitable part of life in Ireland. Major flood events in recent years include widespread flooding in the southeast in the summer of 2008 and widespread flooding throughout much of the country in November 2009.

Floods pose a risk to human life and wellbeing, often cause extensive damage to property and can have severe environmental consequences. A European directive in relation to floods, and Irish national flood policy, are now the driving forces behind flood management in Ireland.

## FLOODS DIRECTIVE

The EU Floods Directive entered into force on 26<sup>th</sup> November 2007 and is concerned with the assessment and management of flood risk. It aims to reduce and manage the risks that floods pose to human health, the environment, cultural heritage and economic activity. It takes a sustainable, catchment-based approach to assessing and managing flood risks.

## CFRAM PROGRAMME

The National Catchment Flood Risk Assessment and Management (CFRAM) Programme was developed to meet the requirements of the Floods Directive, as well as to deliver on core components of the 2004 National Flood Policy.

The CFRAM Programme includes three main stages:

- 2011 - Preliminary Flood Risk Assessment;
- 2013 - Flood Risk and Hazard Mapping;
- 2015 - Flood Risk Management Plans.

To support the CFRAM Programme, a series of CFRAM Studies were commissioned in 2011/12 and the national CFRAM Programme is being implemented through these River Basin District (RBD) scale studies. The studies focus on areas known to have experienced flooding in the past and will also address issues such as climate change, land use practices and future development.





# SOUTH EASTERN CFRAM STUDY

The South Eastern CFRAM Study commenced in July 2011 in the South Eastern district. The Office of Public Works (OPW), as the lead agency for flood risk management in Ireland, appointed RPS as lead consultant in relation to the South Eastern CFRAM Study. The OPW, RPS and the Local Authorities in the South Eastern district will work in close partnership to deliver the objectives of the CFRAM Programme.

A pilot CFRAM Study, the Suir CFRAM Study, has been underway since 2007. The outputs of that study will be coordinated with the South Eastern CFRAM Study.

Pending completion of the South Eastern CFRAM Study, the OPW will continue to work with the Local Authorities to identify and implement interim small-scale flood mitigation works in areas at risk from flooding.

The South Eastern CFRAM Study has several key phases and deliverables. A Flood Risk Review (FRR) has been completed and identified the Areas for Further Assessment (AFAs) listed and illustrated here. These are areas that require detailed assessment to determine their risk of flooding. Detailed survey work has already begun in these areas as a first step towards developing flood risk and hazard maps in 2013.



Location	County	Location	County
Tulow (Tulowphelim)	Carlow	Monasterevin	Kildare
Carlow	Carlow	Allenwood	Kildare
Leighlinbridge	Carlow	Athy	Kildare
Kilkenny (Nore)	Kilkenny	Castledermot	Kildare
Kilkenny (Breaghagh)	Kilkenny	Rathangan	Kildare
Graiguenamanagh	Kilkenny	Suncroft	Kildare
Ballyhale	Kilkenny	Wexford	Wexford
Ballyragget	Kilkenny	Enniscorthy & Environs	Wexford
Callan	Kilkenny	New Ross & Environs	Wexford
Freshford	Kilkenny	Bunclody	Wexford
Inistioge	Kilkenny	North Slobs	Wexford
Thomastown	Kilkenny	South Slobs	Wexford
Daingean	Offaly	Blackwater	Wexford
Portarlinton	Laois	Gorey	Wexford
Portlaoise Rathaven Ballyroan	Laois	Courtown	Wexford
Mountrath	Laois	Kilmore	Wexford
Mountmellick	Laois	Tramore & Environs	Waterford
Rathdowney	Laois	Dungarvan & Environs	Waterford
Ballyroan	Laois	Dunmore East	Waterford
Baltinglass	Wicklow		

The next steps of the South Eastern CFRAM Study include:

- Flood risk maps and flood hazard maps will be drawn up for the AFAs by December 2013;
- Flood risk management objectives and options will be developed during 2013 to 2015;
- Flood risk management plans (FRMPs) will be developed by December 2015.

## STAKEHOLDER ENGAGEMENT AND PUBLIC PARTICIPATION

Stakeholder engagement and public participation are an important and central element of the CFRAM Programme. Early and regular engagement with the CFRAM team maximises the opportunity for stakeholders and the public to influence the plan-making process.

Public information days will be held at key stages and in key locations during the implementation process and will be announced in the media and via national and project websites. They will also be announced in this South Eastern CFRAM Study newsletter which is published every four months. A stakeholder workshop and public open evening were held in Kilkenny on 16<sup>th</sup> November 2011 and synthesis reports in relation to these events are available on the South Eastern CFRAM Study website.

Queries or submissions can be made at any time by phone, email or in writing or via the national and project websites.

Katie Smart  
RPS Consulting Engineers  
West Pier Business Campus  
Dun Laoghaire  
County Dublin  
Tel. 01 4882940  
Email. [info@southeastcfframstudy.ie](mailto:info@southeastcfframstudy.ie)  
Web. [www.cfram.ie](http://www.cfram.ie); [www.southeastcfframstudy.ie](http://www.southeastcfframstudy.ie)



## SUMMARY OF PROGRESS

- A stakeholder workshop and public open evening were held in Kilkenny on 16<sup>th</sup> November 2011.
- A Flood Risk Review was completed in February 2012 and a decisive list of Areas for Further Assessment (AFAs) requiring detailed assessment to determine their risk of flooding was identified.
- Survey work has begun to collect detailed information on rivers for the development of hydraulic models of the river systems in the South Eastern district. This will provide essential information for the assessment of flood levels, extents, hazards and risks, and the development of measures to manage such risks.

